

# PROPERTY FOR SALE



ANDIUM  
HOMES

## INFORMATION SHEET

10 GRASETT PARK, ST SAVIOUR

### BRIEF POINTS

- Refurbished  
3 bedroom house
- Garage and parking
- Private rear garden
- Town outskirts location
- Close to local amenities
- Ideal family home

**PRICE £410,000**  
**FIRST TIME BUYER**  
**RESTRICTION**  
**"FREEHOLD"**

(Subject to means testing, all potential purchasers who are registered in Band 5 on the Affordable Housing Gateway may be eligible for a deferred payment of up to 25%)

### CONTACT DETAILS

Property Sales Team:

**Tel:**  
500700

**Email:**  
sales@andiumhomes.je

**Web:**  
www.andiumhomes.je



### PROPERTY DESCRIPTION:

This spacious 3 bedroom semi-detached house is an ideal family home. Downstairs, the property provides a newly fitted eat-in kitchen, lounge and newly fitted w.c. Upstairs comprises of a newly fitted house bathroom, 2 double bedrooms and 1 single bedroom (all with built-in wardrobes). Externally, there is a large single garage with utility area plus driveway parking together with a good sized rear garden.

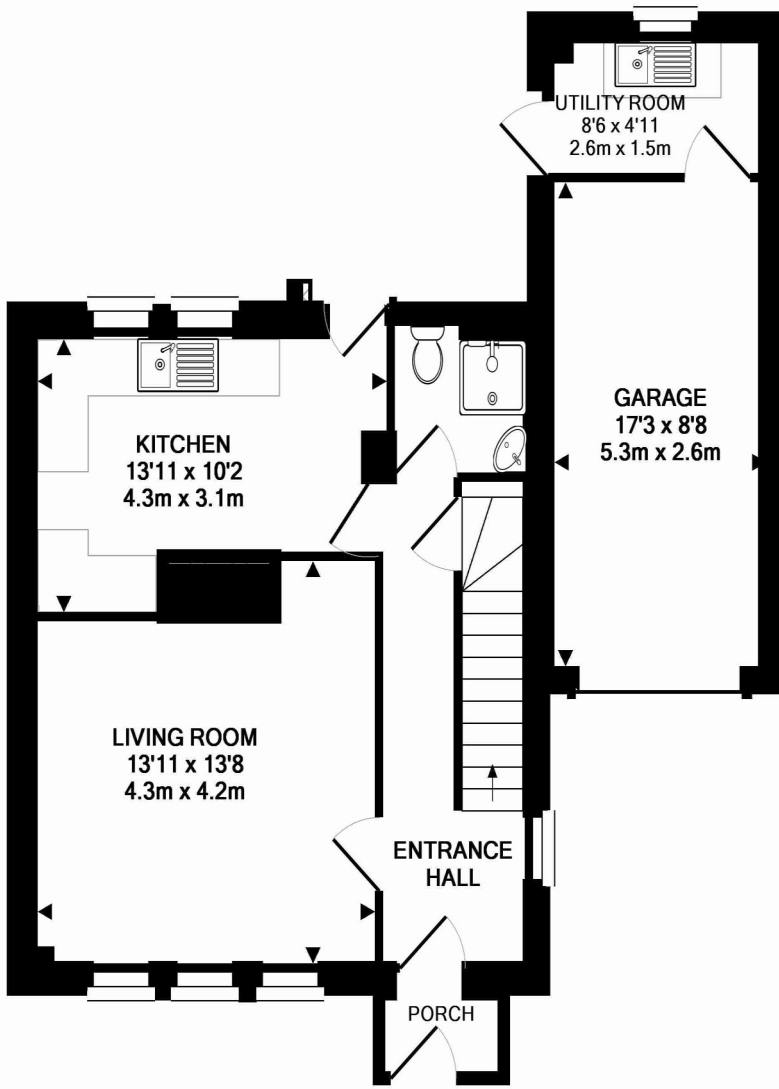
### LOCATION:

With a mixture of private ownership and social housing, this property provides a town outskirts location and close proximity to local amenities.

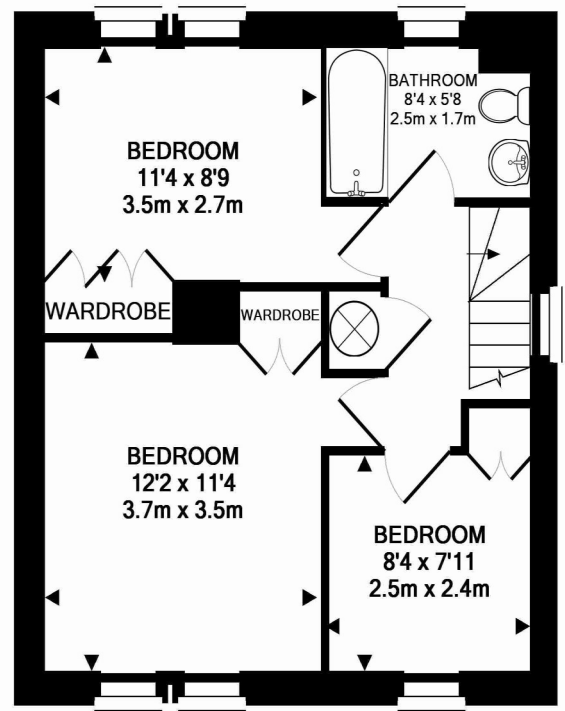
### SERVICES:

Mains water, electric central heating, fully double glazed.

To view the list of properties available to purchase under an affordable housing scheme then please visit [www.andiumhomes.je/findahome](http://www.andiumhomes.je/findahome).



GROUND FLOOR  
 APPROX. FLOOR  
 AREA 640 SQ.FT.  
 (59.4 SQ.M.)



1ST FLOOR  
 APPROX. FLOOR  
 AREA 438 SQ.FT.  
 (40.7 SQ.M.)

TOTAL APPROX. FLOOR AREA 1078 SQ.FT. (100.2 SQ.M.)